

Cold War: Homefront

Music

Artist: Chuck Berry

Song: Roll Over Beethoven

“Ike” Eisenhower

- Reflected beliefs of modern Republican Party: Reduce gov't spending & social programs (but not all)
- Dynamic Conservatism (balancing economic conservatism w/ some activism)
- Economic prosperity (post WWII)
- Homogenized “conformity” society

Eisenhower the Conservative

- Ended gov't price and rent controls.
- Cut gov't aid to public housing.
- Abolished Reconstruction Finance Corporation (lent \$ to banks and large businesses).
- Cut \$ to TVA

Eisenhower the Activist

- Federal Highway Act (1956) - largest public works program in American history, provided 40,000 miles of interstate highway.
- Great Lakes-St. Lawrence Seaway connected the Great Lakes to the Atlantic.
- Extended the Social Security system.
- Extended unemployment.
- Increased minimum wage.



Win with
IKE!

Win with
IKE!

IKE
EMERSON
ALAN
RAN

Win with
IKE!

NEBRASKA
FOR
IKE

WIN-IKE
Win with
IKE!

with
IKE!

Win
IKE!

Win
IKE!

IKE

Police Officer

Man in white hat

Man in suit

The Red Scare (again)

Fear of Communism

- loss of China
- about 80,000 Americans members of Communist party at height of WWII
- A spy was found selling atomic secrets
- FEAR SPREAD...

U.S. Homeland Policy

Truman sets anti-Communist policies at home

- **Loyalty Review Board** - investigated government employees
- **The House Un-American Activity Committee (HUAC)** - Congressional committee to search out disloyal Americans

McCarthyism

- Senator Joseph McCarthy
- Led Congressional hearings to seek out "unfriendly" members of the government and Hollywood

McCarthy Hearings



McCarthyism

"The Hollywood Ten"

- "friendly" witnesses testified
- "unfriendly" witnesses refused
citing the hearings as
unconstitutional
- Blacklisting

McCarthyism



McCarthyism

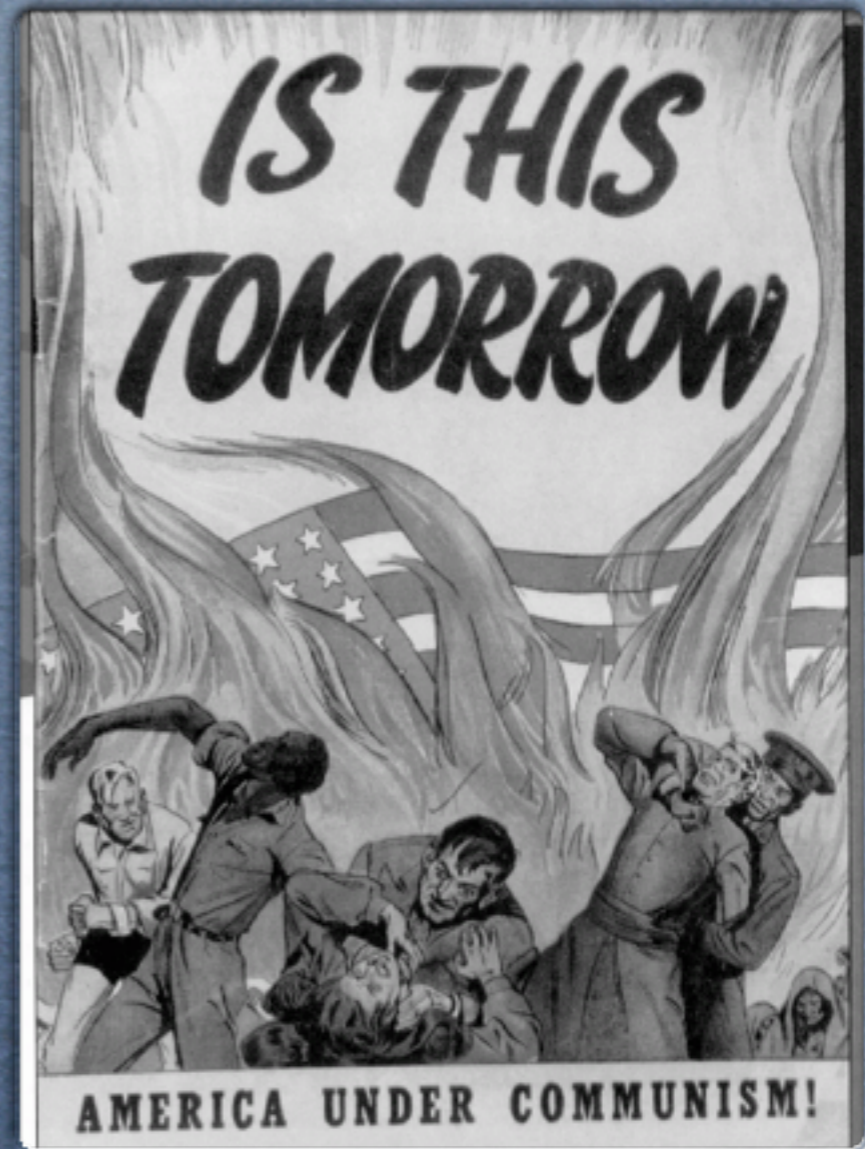


"The Hollywood Ten"

Think, Pair, Share

Think: What movies came out of this era?

Pair/Share: What images did they portray about society?

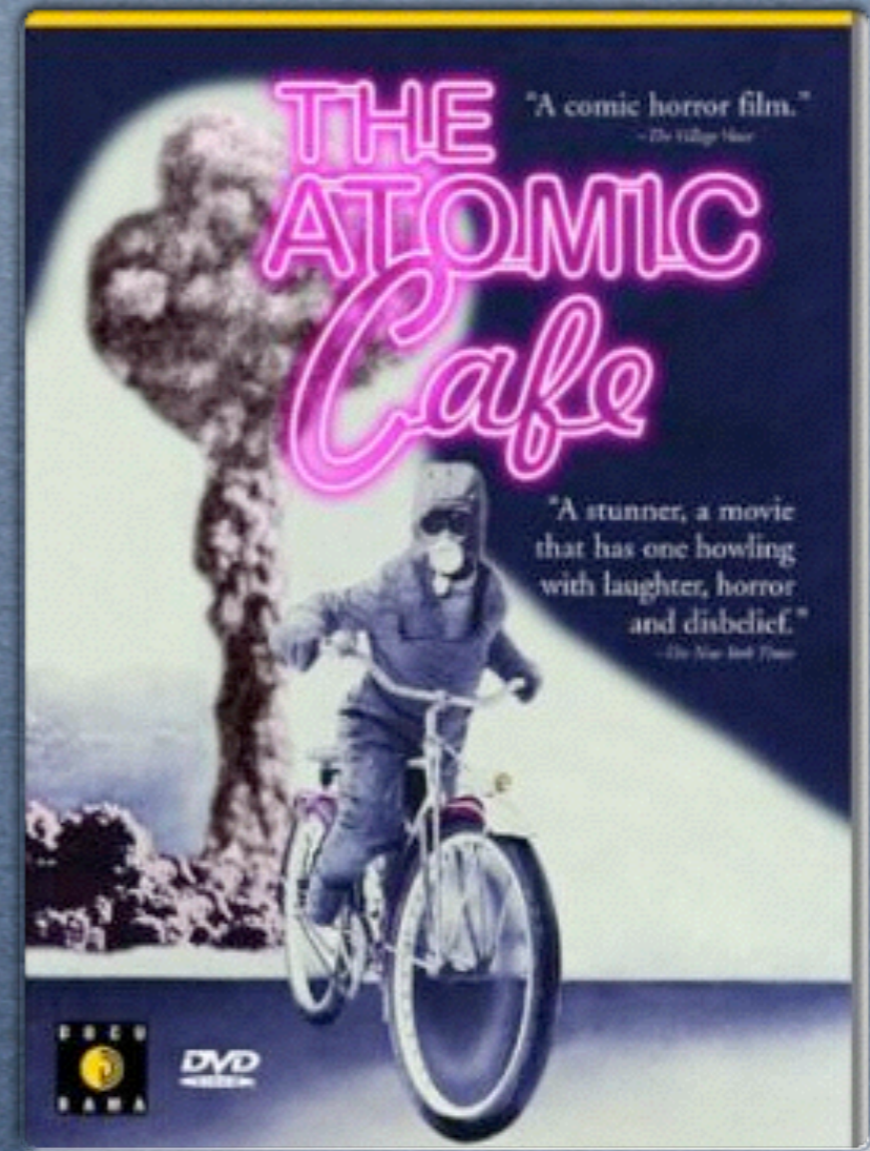


The Rosenbergs



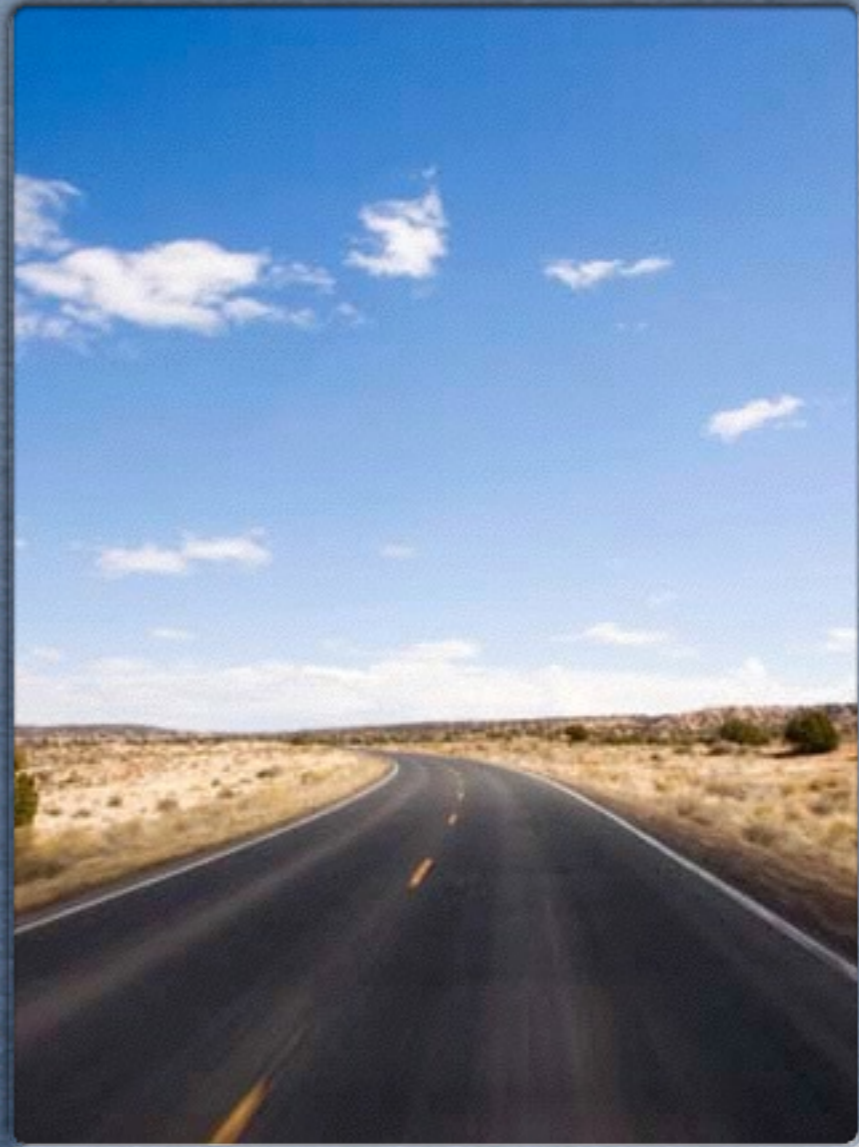
Video: Atomic Cafe Hysteria in USA, Hiss spy case, end at Eisenhower

1. What did the American public face in the early years of the Cold War?
2. How did the American public react to these Cold War tensions?
3. What images did you see in the film that confirms your ideas?
4. How did the development of the Atomic Bomb by the Soviet Union effect the public's views?



Post-WWII Society

GI Bill
Baby Boomers
Highways
1950's



Bomb Shelters



Suburbs



Television



Entertainment



Cultural Shifts

Rock n Roll

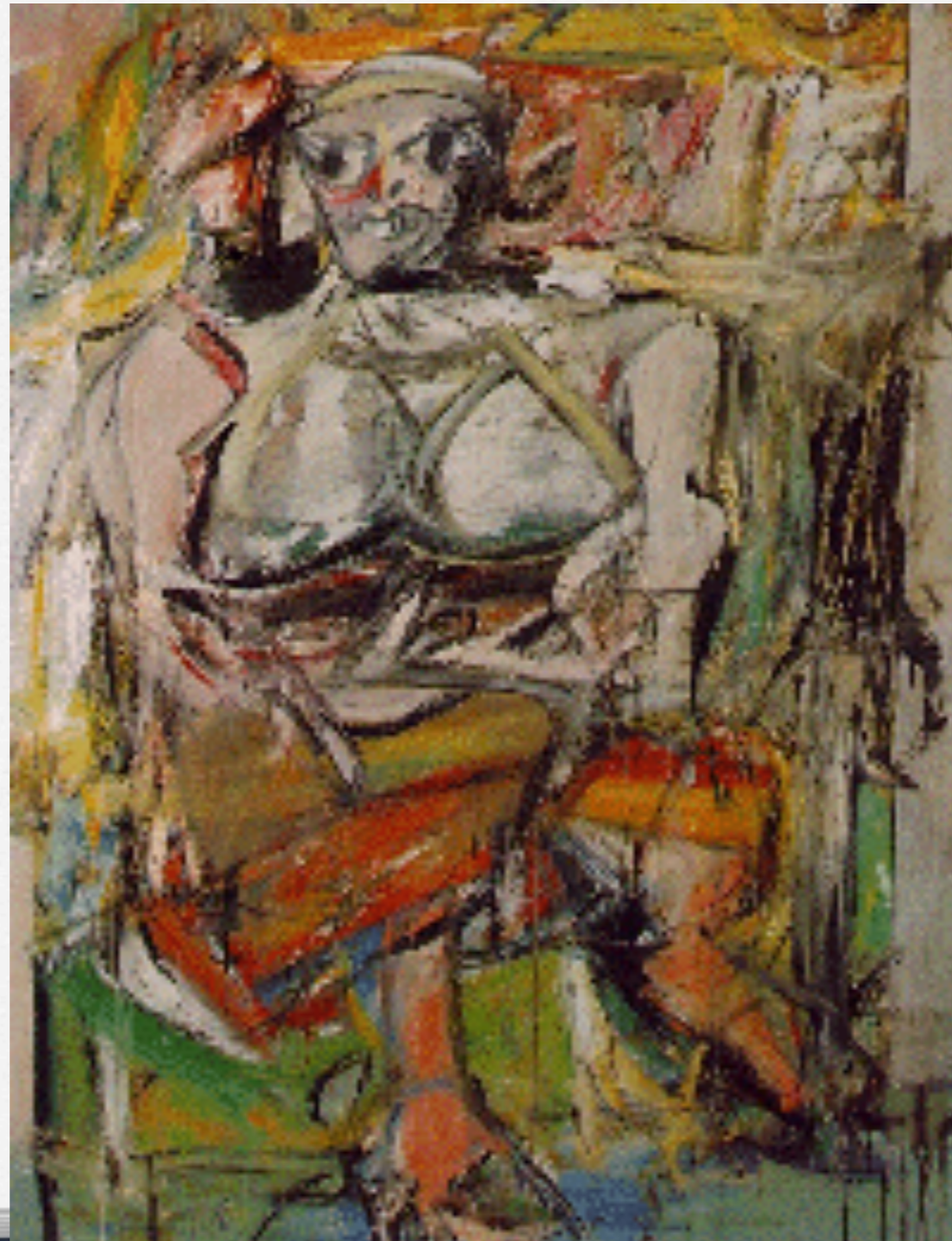


Music
Artist: Elvis Presley
Song: Jailhouse Rock



The Beatniks

Abstract Art





The Other America

Prosperity of the 1950's did not reach all segments of society

- 35 million Americans lived below poverty line
- Many lived in depressed rural areas
- Approx. 2/3 lived in urban slums
- Minorities are disproportionately affected

Beginning of Black Civil Rights movement

Activity:

Purpose:

To make students aware of the powerful effect of public opinion on the government and the justice system

Task:

Pairs of students will investigate and report on various aspects of the Hiss & Rosenberg cases

Presentations:

Students will present their reports in the order of the development of the cases on the whiteboard

- Groups will have one member write on the board
- The other group member will tell the class what they found
- Class takes notes

Alternative Activity / Option 2: 1950's Album Covers

Project Music Library: 1950's